

PARAPET BACKING



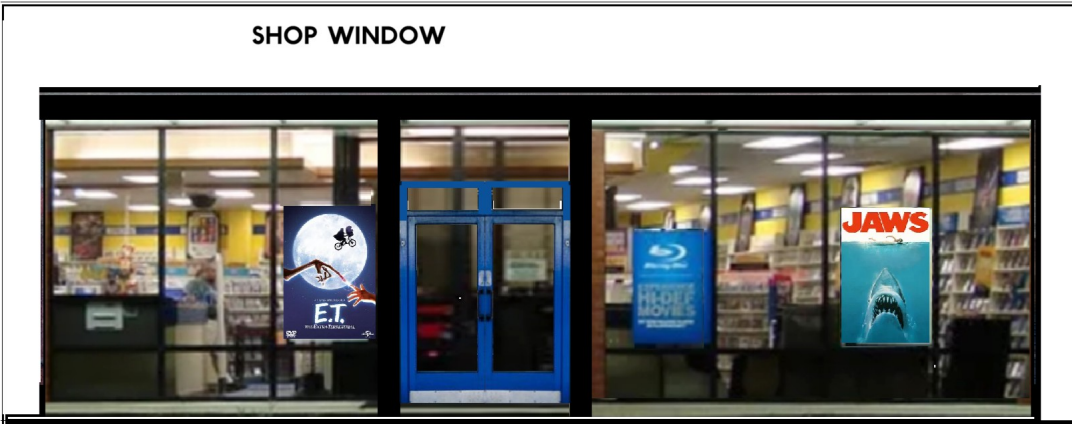
UPPER WINDOWS



OPTIONAL SIDE WINDOWS



SHOP WINDOW



KINGSWAY



SIDE PILLARS



PARAPET CAPPING



All parts on this sheet except ROOF, to be glued to thin 160gsm card.
Fix roof to 1.4mm mounting card.

K216 Blockbuster

ROOF



K216 Blockbuster Christmas Download 2024

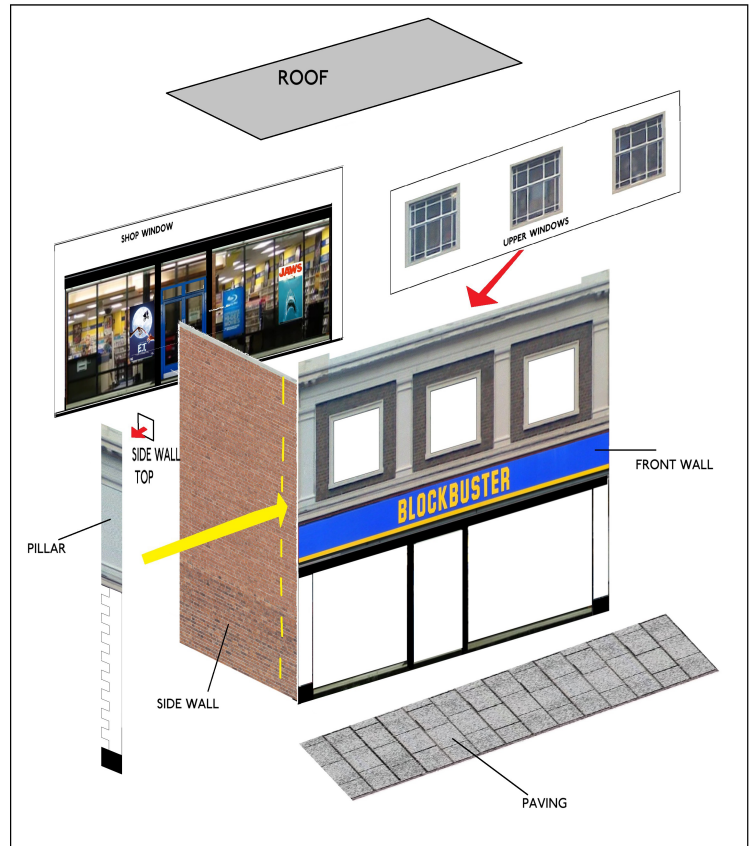
The download has three sheets including these instructions.

The parts on sheet 1 should be fixed to stout card (I used mounting board approximately 1.5mm thick). The parts on sheet 2 should be fixed to thin 160gsm card (about the same as a Christmas card) **except for the roof** which should be fixed to stout card as sheet 1.

Use a knife and steel rule on a cutting mat to cut the parts out, and Bostik All Purpose adhesive to glue the parts together.

Find previous Christmas downloads on the Kingsway website at <https://www.kingswaymodels.com/freedownloads>

1. On sheet 1, carefully cut out the window openings on the front wall. This is best done *before* the wall itself is cut out. Colour the cut edges with soft 3B pencil. Save any parts removed for later use. Cut out the whole front wall.
2. Cut out the windows (up and downstairs from sheet 2). Glue these into place behind the openings.
3. Cut out the parapet backing from sheet 2 and glue to the top rear of the front wall.
4. Cut out the two side walls. (If desired a window may be added to each side wall using the rectangular pattern as a guide to cut an opening. Add the windows behind the openings).
5. Glue the side walls to the rear of the front wall. Use a bracket in each corner to strengthen the joins.
6. Cut out the side pillars and glue to cover the exposed edges of the front wall.
7. Cut out the small 'side wall top' pieces removed from the window earlier and glue to the inside top of the pillars.
8. Cut out the roof and colour the edges with the 3B pencil. Glue in place on top of the walls and against the rear of the parapet. Add a bracket between each side wall and the roof, towards the rear of the building.
9. Cut out the grey parapet capping strips and glue along the top edges of the parapet.
10. Cut out the paving strip and glue along the front of the model. Similar paving is available in the Kingsway Models PAV Paving kit.



The Blockbusters model is compatible with the large number of 1/76 scale models available in the main Kingsway Models range of card kits.

It is seen here with WWMD Woolworths and MSB Marks & Spencer.



MERRY CHRISTMAS

See the range of kits at www.kingswaymodels.com